



# EAC215

# Active Filters

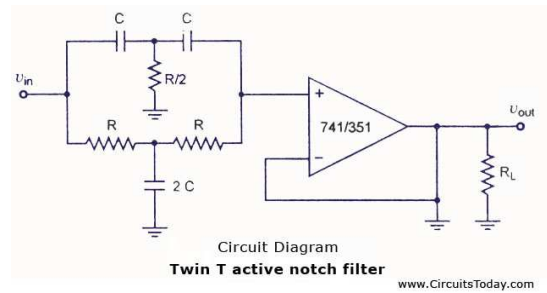
**Please Note: You are expected to finish all your practical testing for this experiment in two lab periods.**

**Name:** \_\_\_\_\_

**Class:** \_\_\_\_\_



10. Modify your circuit to a second order high pass filter with the same  $f_c$  as shown at right.



11. Measure and record the phase shift at  $f_c$  (the center frequency).  $\Theta$  at  $f_c =$  \_\_\_\_\_

12. Graph the frequency response on a new sheet of semi-log paper.

13. If we apply an inverting buffer to the output of this circuit, the filter's output will be inverted. Does this convert the filter to a narrow band high-pass filter? Explain your answer. (**Note.** Think before you answer.)

---



---



---



---



---



---